



Non-Native Game Fish Policy

Mike Gauvin

Recreational Fisheries Manager

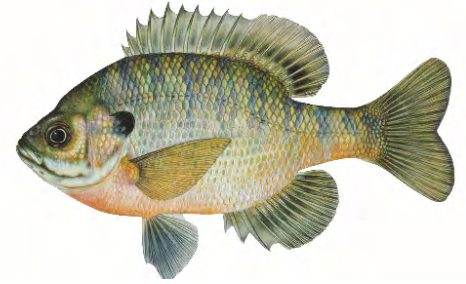
Oregon Fish and Wildlife Commission

Exhibit D

January 15, 2021



Purpose



- Provides direction on the management of non-native game fish to ensure management actions are consistent with the conservation of native fish and that resources to establish, maintain, or enhance these fisheries are most effectively applied.
- Clarifies Oregon's management of a very diverse suite of species found across the landscape and provides direction on where and when to focus efforts to optimize their recreational use.

Goal



Define how and where to manage non-native game fish to provide:

- ✓ Recreational angling opportunity;
- ✓ Support important social and economic benefits;
- ✓ Reduce or avoid risk or potential risk to native fish and wildlife.

Implementation likely specific to individual sites, locations, or environments based upon:

- ✓ Native and non-native fish distributions;
- ✓ Availability and quality of suitable habitat and the importance of that habitat to native and non-native fish species.

Oregon's Non-Native Game Fish

Centrarchids	Perches	Pikes	Catfishes	Trouts	Temperate Bass	Herrings
Largemouth bass	Walleye	Tiger muskellunge	Channel Catfish	Brook trout	Striped bass	American Shad
Smallmouth bass	Yellow perch		Blue catfish	Brown trout	W/S Hybrid bass	
Spotted bass			White catfish	Lake trout		
Black crappie			Black bullhead	Tiger trout		
White crappie			Brown bullhead	Golden trout		
Pumpkinseed			Yellow bullhead	Arctic char		
Bluegill			Tadpole madtom	Atlantic salmon		
Green sunfish				Lake whitefish		
Redear sunfish						
Warmouth						
Sacramento perch						

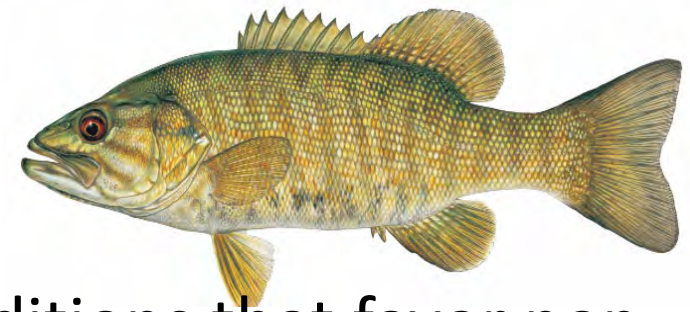
Key Elements



1. The Non-Native Game Fish Management Policy applies to all geographic areas within the State's jurisdiction.
2. Non-native game fish provide important and valued recreational angling opportunities to the people of Oregon. Recreational use of these fisheries has social and economic importance throughout the state.



Key Elements

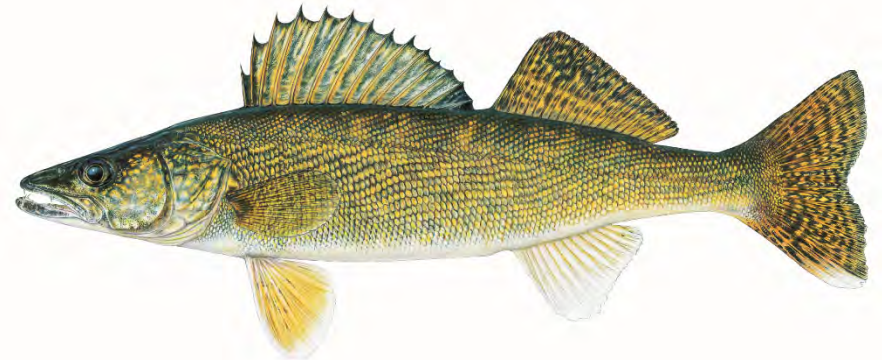


3. A changing climate will result in conditions that favor non-native game fish and as a result, expansion of distribution is anticipated.

4. Non-native gamefish may pose a risk to native fish and wildlife and must be managed to ensure this risk is within acceptable limits.



Key Elements



5. ODFW shall manage non-native gamefish to meet the following objectives:
 - a. Optimize recreational use to the benefit of Oregonians consistent with conservation of native fish;



Key Elements



5. Non-native game fish are an important resource, ODFW shall manage them to:
- b. Provide a variety of recreational angling opportunities reflecting the diverse resource and a diverse public interest;



Key Elements



5. Non-native game fish are an important resource, ODFW shall manage them to:

c. Prevent or minimize potential adverse impacts to native fish and wildlife;

- predation
- competition
- pathogen transmission
- hybridization
- ecosystem function



Bull Trout - Brook Trout Hybrid from Sun Creek



Key Elements



6. This policy does not address the on-going stocking and use of hatchery trout species native to Oregon, such as rainbow and cutthroat trout, and kokanee salmon.

These species may be addressed in other forums through development of Conservation Plans, Hatchery Genetic Management Plans, and through federal Endangered Species Act recovery plans.



Policy Directives



1a. Rivers, Streams, and Natural Lakes:

Where non-native game fish are not present, ODFW will actively manage against the establishment of non-native game fish.



Coquille River

WANTED

INFORMATION LEADING TO THE ARREST AND CONVICTION OF WHOEVER IS RESPONSIBLE FOR THE RECENT INTRODUCTION OF SMALL MOUTH BASS IN THE COQUILLE BASIN.



The illegal introduction of species into our waters has been identified as the single largest cause of fishery management loss in our nation. A few thoughtless individuals are responsible for the loss of our precious fisheries.

Don't let them get away with it!

Anyone with information about the incident should call the TIP Hotline at (800) 452-7886.

REWARD up to \$3,300

YOU CAN REMAIN ANONYMOUS AND STILL COLLECT YOUR REWARD!

State of Oregon Department of Fish and Wildlife
1000 NE Oregon Street, Suite 1000
Portland, OR 97232
Phone: (503) 725-2200
Fax: (503) 725-2201
www.dfw.state.or.us



Policy Directives



1b. Rivers, Streams, and Natural Lakes:

Where non-native game fish are present and pose a risk to the conservation or recovery of native fish or wildlife, or would be detrimental to the reestablishment of extirpated native fish or wildlife populations, ODFW will actively manage against the expansion of non-native game fish.

At some specific locations, this may include efforts to reduce or remove non-native game fish depending on the degree of conservation risk, management options and resources available, and likelihood of success.

Managing Risk

Prevent or Minimize Range Expansion

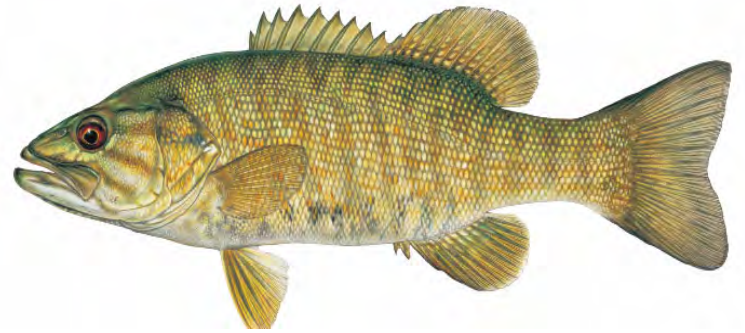


Reduce current distribution



Risk and/or Mgmt
Feasibility

Policy Directives



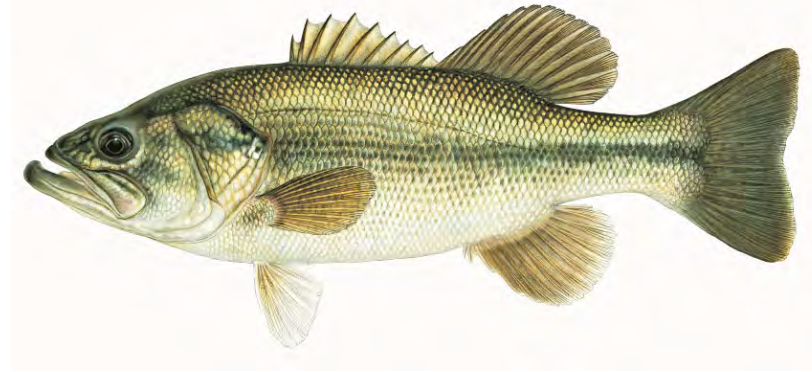
1c. Rivers, Streams, and Natural Lakes:

Where the impact of non-native game fish on native fish or wildlife is negligible or native fish or wildlife have been extirpated and the natural ecosystem functions have been altered such that reestablishment of native fish populations is unlikely, ODFW will manage for recreational opportunity of non-native game fish.

Lower Owyhee River



Policy Directives



1d. Ponds, Lakes, and Reservoirs:

If populations of non-native and native game fish combine to provide a recreational fishery (mixed stock fishery), ODFW may continue to manage for the full suite of species.



Policy Directives



1e. Ponds, Lakes, and Reservoirs:

If a population of non-native game fish is present and the population is detrimental to the quality of the fishery, ODFW may actively manage by removing or reducing the non-native population causing the problem to reestablish the desired recreational fishery.

Phillips Reservoir



Policy Directives



1f. In Waterbodies with Significantly Altered Habitat:

ODFW will continue to establish, maintain, or enhance a desired recreational fishery for non-native game fish as long as the non-native game fish population and associated fishery do not pose a conservation risk to native species.

Henry Hagg Reservoir



Policy Directives



2. In response to an illegal introduction:

- a. Attempt to eradicate the species if it is feasible and practical;
- b. If the species cannot be eradicated and presents a conservation risk, actively manage to reduce its presence or influence;
- c. If the species cannot be eradicated and presents minimal conservation risk, manage to prevent or minimize its population growth and range expansion, but may also manage the non-native game fish to provide recreational opportunity at that location.

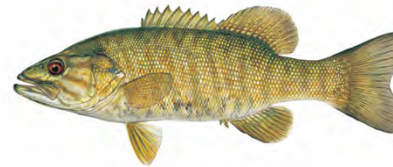
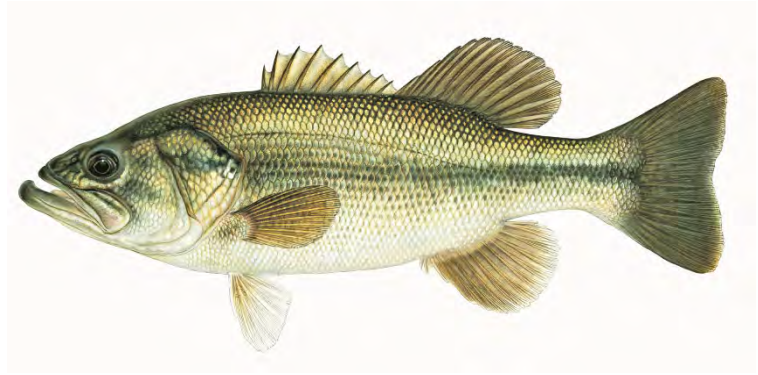
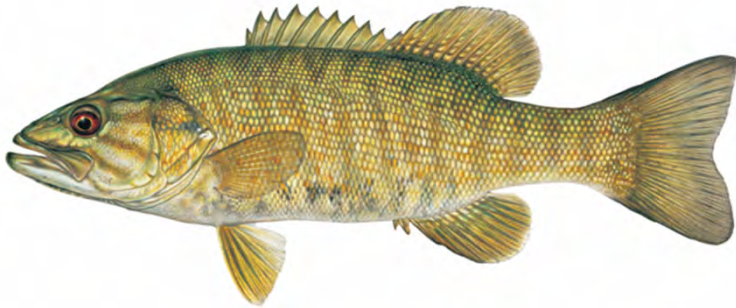
Rotenone Treatment
Brown Bullhead



Davis Lake



Species Maps



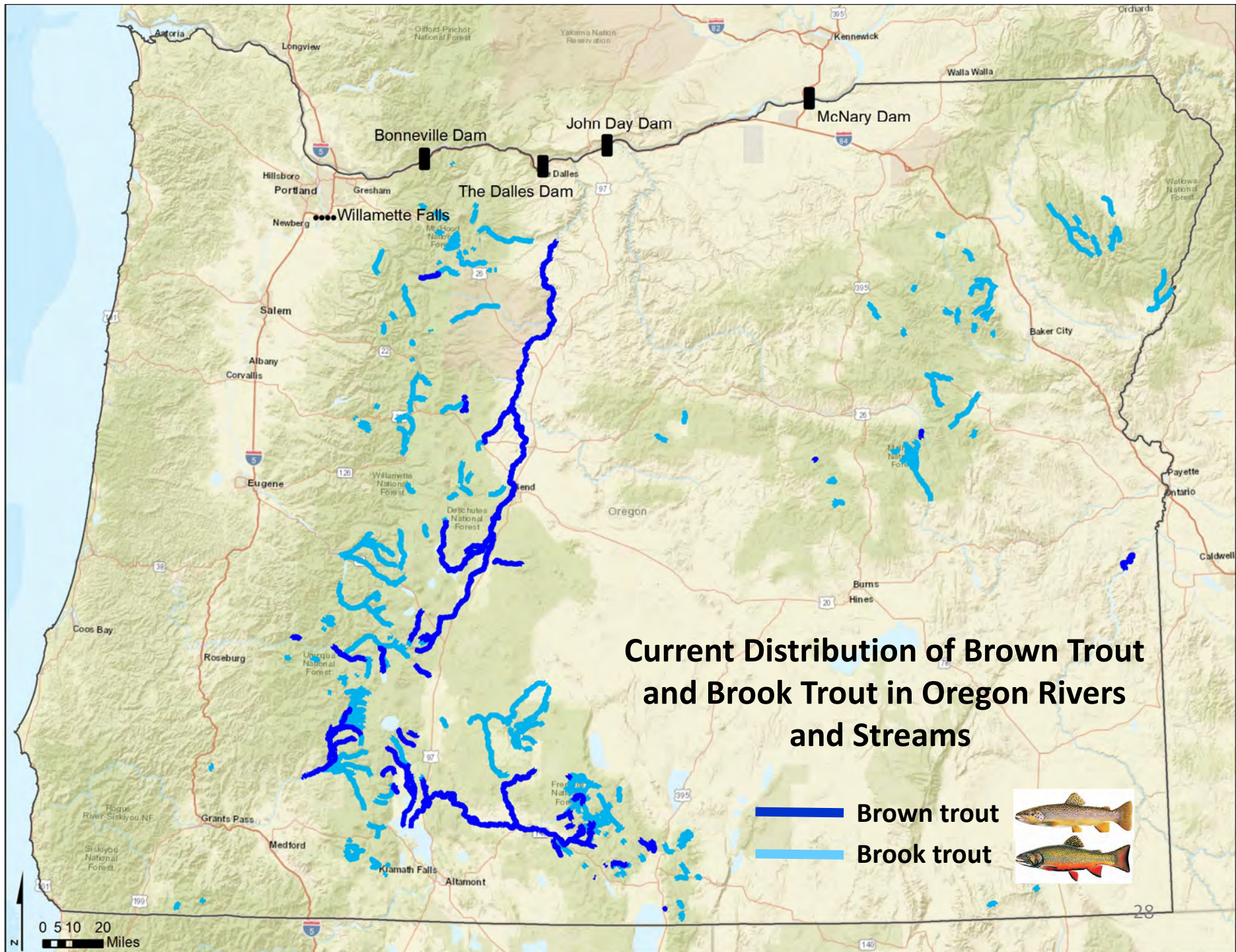


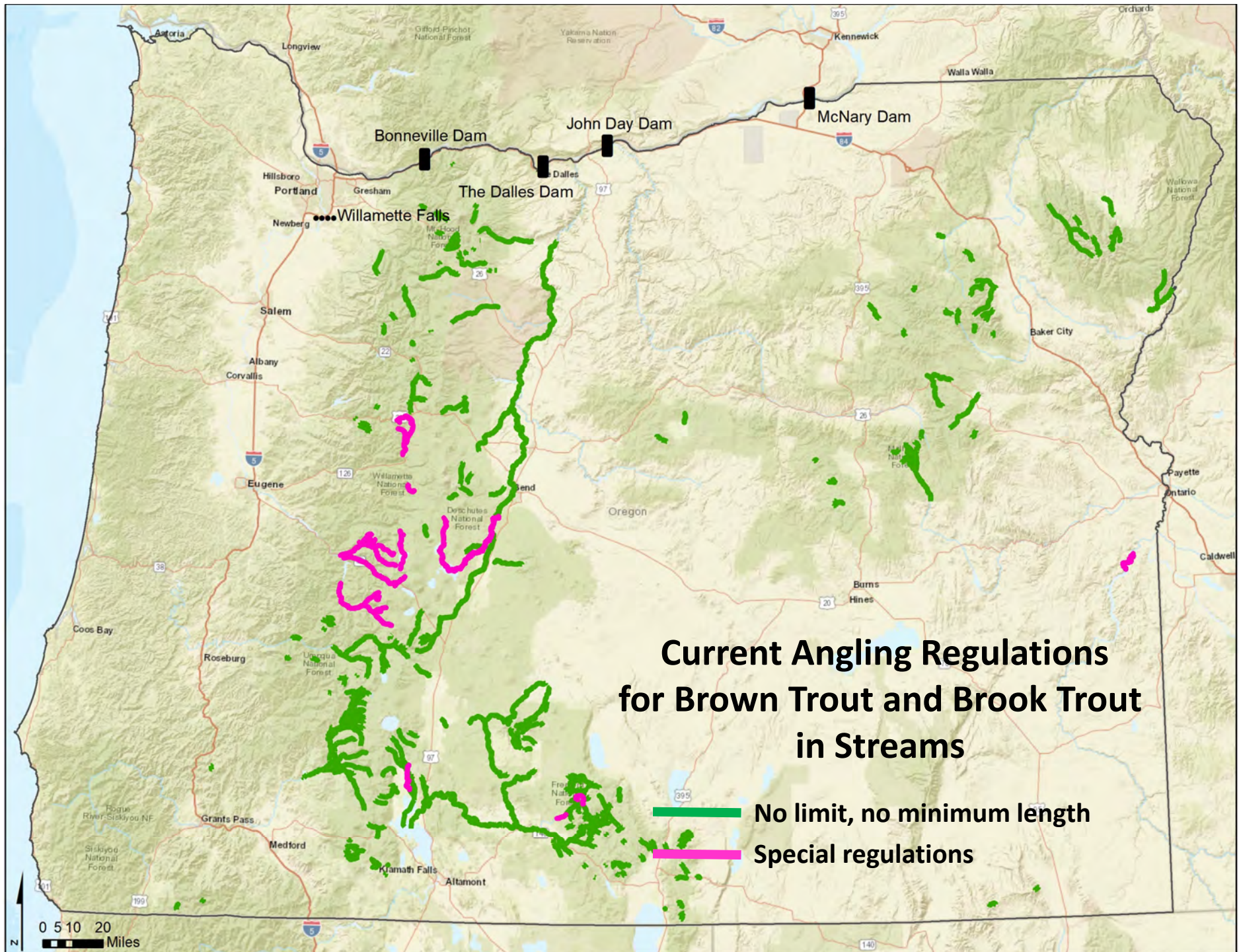
Current Distribution of Walleye in Oregon Rivers and Streams

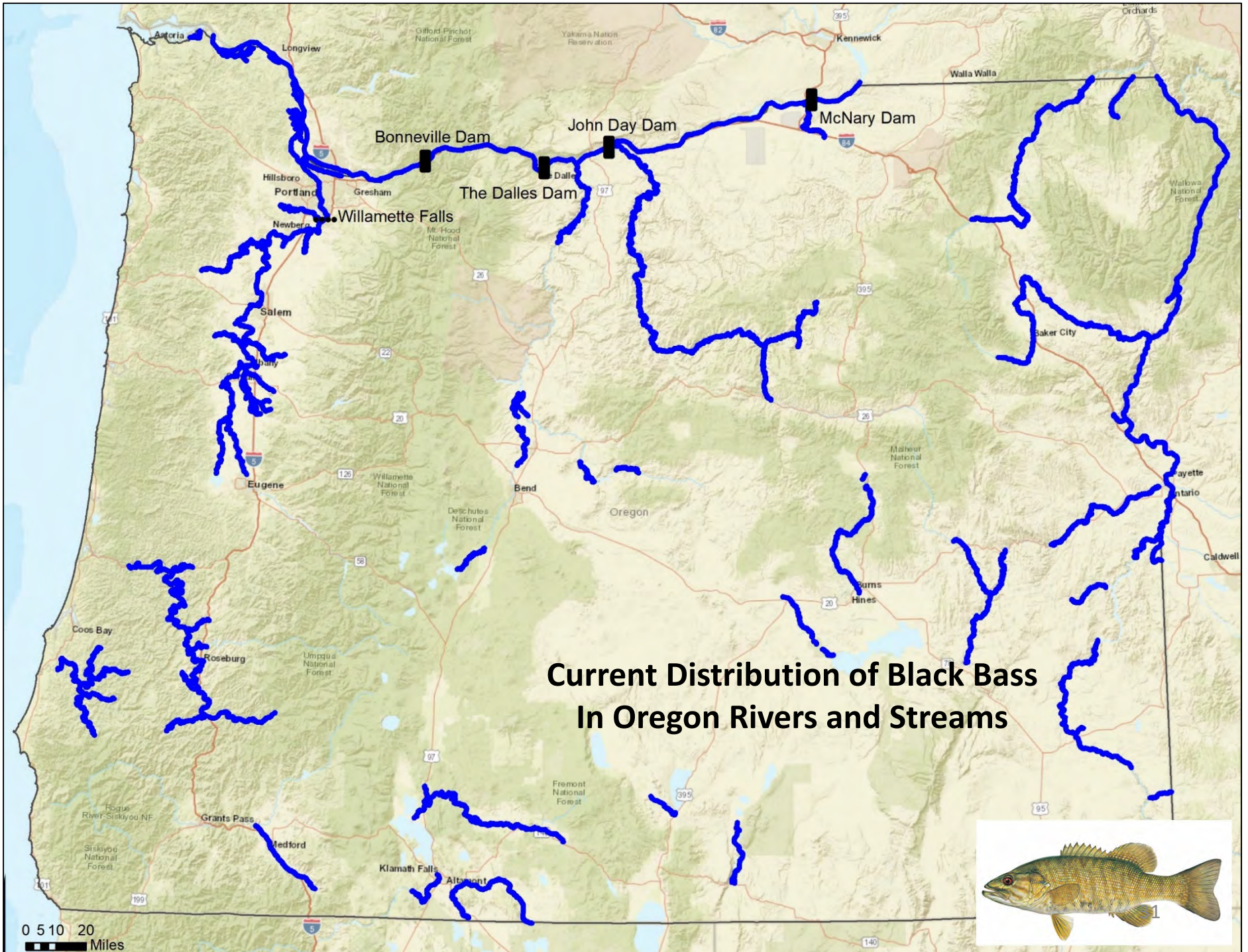




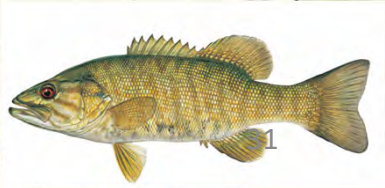


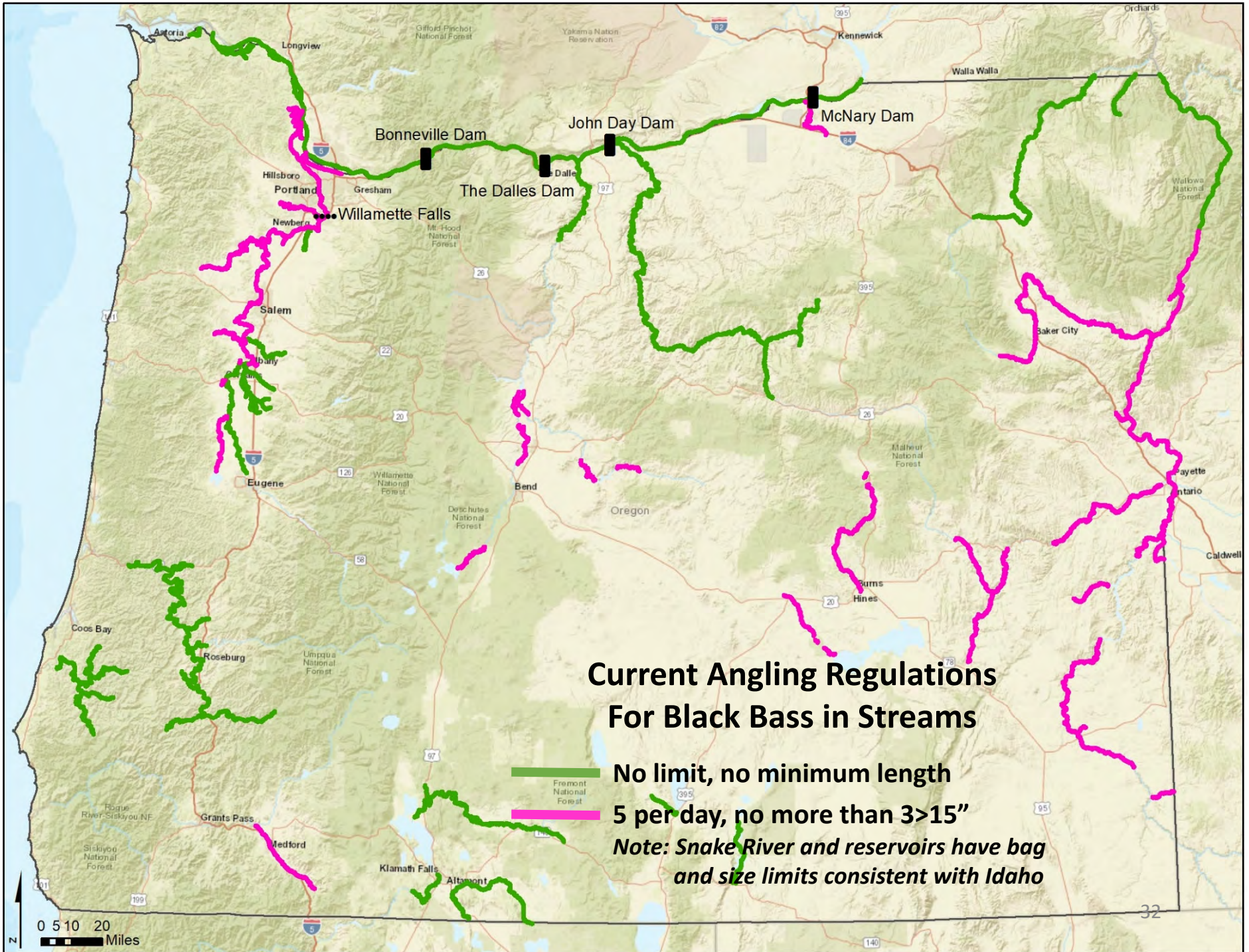


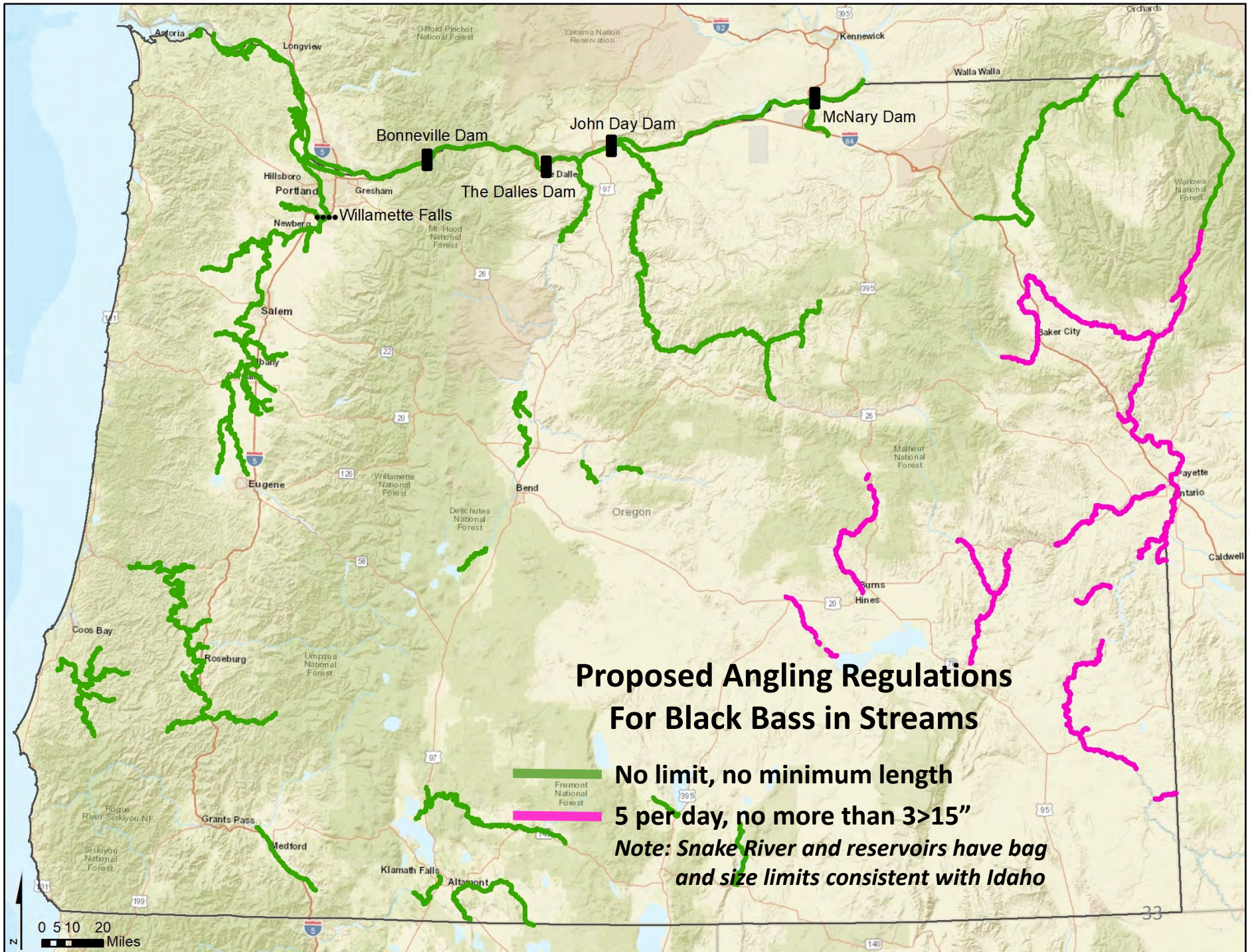




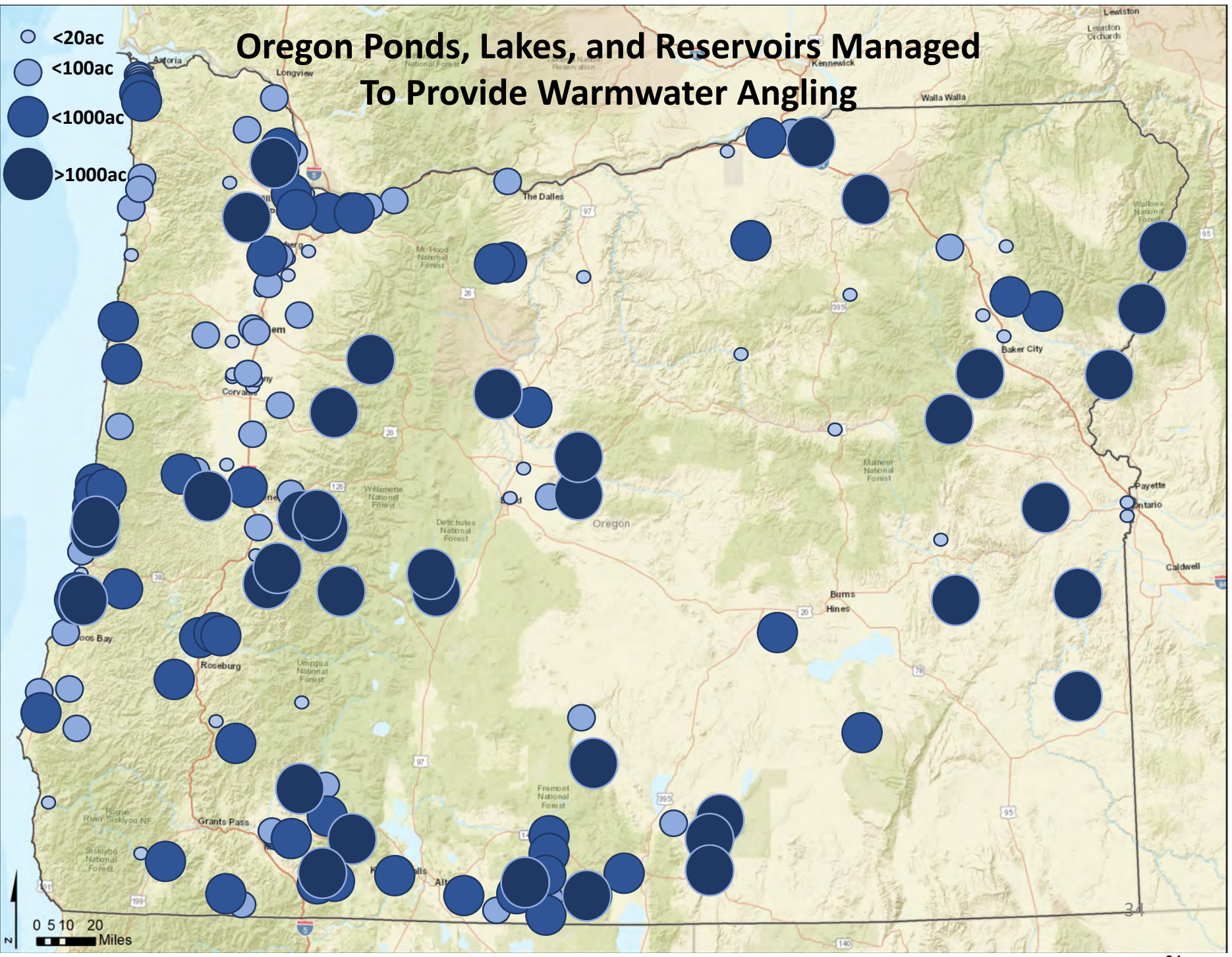
**Current Distribution of Black Bass
In Oregon Rivers and Streams**







Oregon Ponds, Lakes, and Reservoirs Managed To Provide Warmwater Angling



Questions

